



ACHI BIZ SERVICES PTE. LTD.

ONE STOP CORPORATE SERVICES WITH BEYOND EXPECTATIONS!



HOME PAGE



EMP. AGENCY



EMPLOYMENT AGENCY FOR PASSES ISSUED BY THE MINISTRY OF MANPOWER (MOM) IN SINGAPORE

WORK PASSES FOR PROFESSIONALS:

- 1) EMPLOYMENT PASS (EP)
- 2) PERSONALISED EMPLOYMENT PASS (PEP)
- 3) ENTREPASS
- 4) TECH.PASS
- 5) OVERSEAS NETWORKS & EXPERTISE PASS (ONE PASS)

PASSES FOR FAMILY MEMBERS:

- 1) DEPENDANT'S PASS (DP)
- 2) LONG TERM VISIT PASS (LTVP)
- 3) PRE-APPROVED LONG TERM VISIT PASS (PLOC)
- 4) LETTER OF CONSENT (LOC) FOR LTVP HOLDER
- 5) LETTER OF CONSENT (LOC) FOR BIZ OWNER-DPH

WORK PASSES FOR SKILLED & SEMI-SKILLED WORKERS:

- 1) S PASS
- 2) WORK PERMIT FOR MIGRANT WORKER (MW)
- 3) WP FOR MIGRANT DOMESTIC WORKER (MDW)
- 4) WP FOR CONFINEMENT NANNY (CN)
- 5) WP FOR PERFORMING ARTISTE (PA)

PASSES FOR STUDENTS:

- 1) WORK HOLIDAY PASS (WHP)
- 2) WORK AND HOLIDAY VISA PROGRAMME (WHVP)

CORPORATE SERVICE PROVIDER (CSP) /
REGISTERED FILING AGENT (RFA)

EMPLOYMENT CUM RECRUITMENT AGENCY,
HR COMPLIANCE & IMMIGRATION SERVICES



ACHI BIZ SERVICES PTE. LTD.

ONE STOP CORPORATE SERVICES WITH BEYOND EXPECTATIONS!



WHAT ARE THE EXEMPTIONS AND WORKING WHILE ON A VISIT PASS IN SINGAPORE?

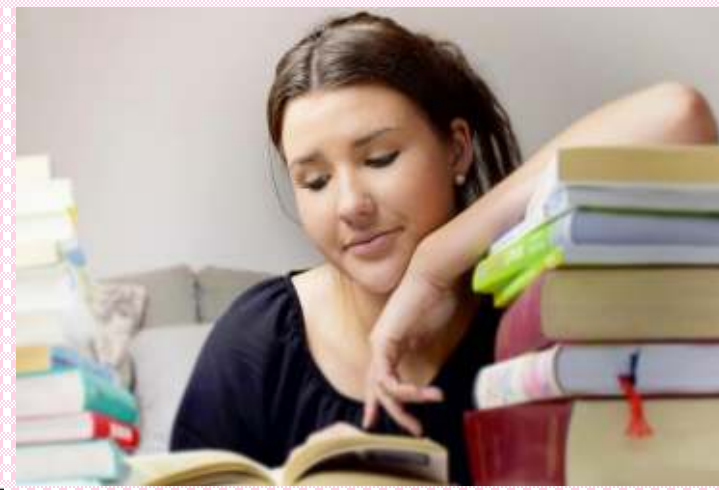
**CORPORATE SERVICE PROVIDER (CSP) /
REGISTERED FILING AGENT (RFA)**



**WORK PASS
EXEMPT
ACTIVITIES**



**MISCELLANEOUS
WORK PASS**



**WORK PASS
EXEMPTION FOR
FOREIGN
STUDENTS**



**WORK PASSES FOR
HOLDERS OF LONG
TERM VISIT PASSES
ISSUED BY ICA**



**EMPLOYMENT CUM RECRUITMENT AGENCY,
HR COMPLIANCE & IMMIGRATION SERVICES**



**ACRA UEN: 201415822C | ACRA RFA: FA20143418 | MOM EAL: 18C9185 | REPUBLIC OF SINGAPORE
T: (+65) 69048665 | M: (+65) 91097753 | W: (+65) 91097753 | E: BIZ@ACHIBIZ.COM | www.ACHIBIZ.com**

